

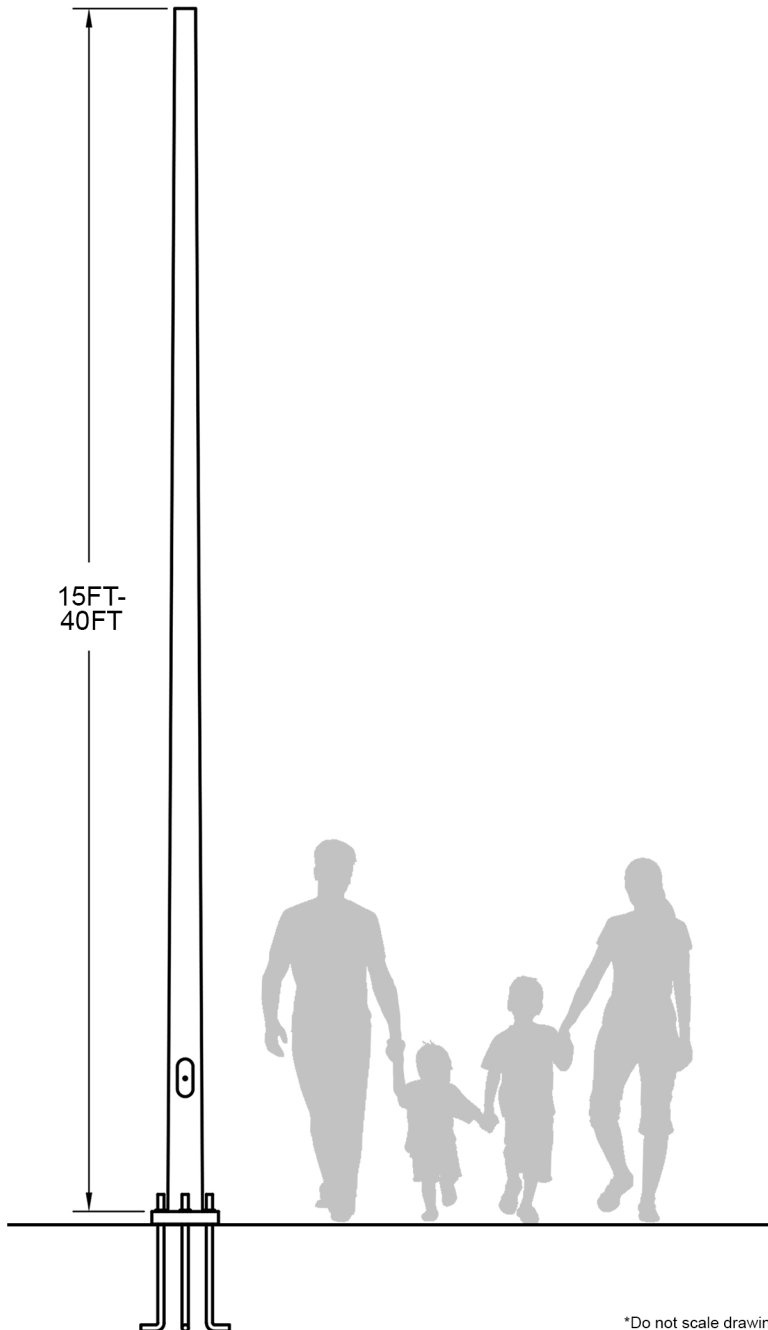


ANCHOR BASE POLE

EOS 500 SERIES (EPA:5)

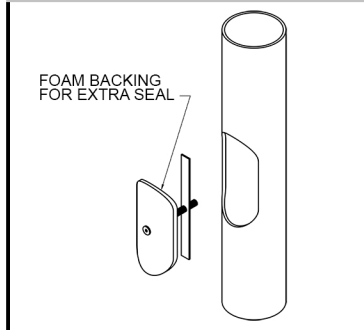


Max EPA: 5 •
Material: Fiberglass •
Non-conductive •
Non-corrosive •
Compliant with NAAMM & AASHTO •

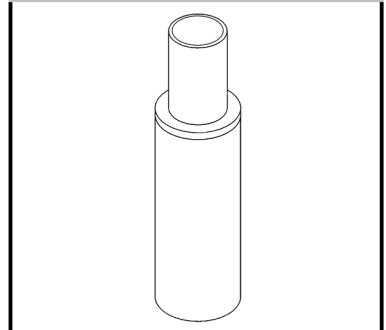


*Do not scale drawing

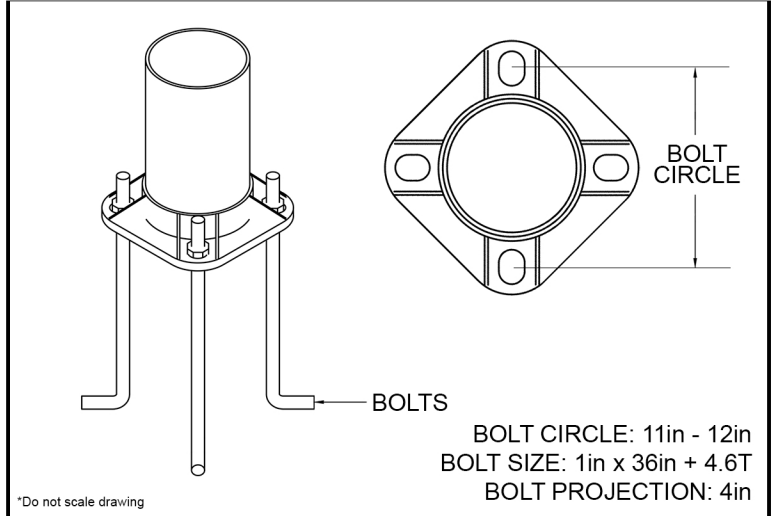
HANDHOLE



TENON

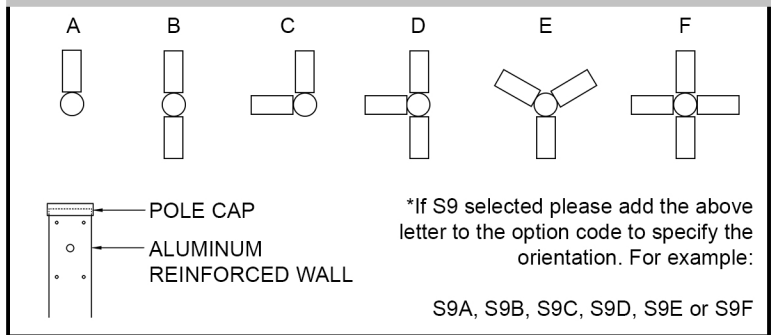


ANCHOR BASE



*Do not scale drawing

SIDE MOUNT (not applicable when tenon opt. selected)



*If S9 selected please add the above letter to the option code to specify the orientation. For example:

S9A, S9B, S9C, S9D, S9E or S9F

ORDERING EXAMPLE

MODEL #	TENON MOUNT	SIDE MOUNT	COLOR	HANDHOLE	*F. HOLDER	*GFI	*TRANSFORMER BASE	*SHROUD
(please reference charts for model #)	T4 - 2 3/8in x 4 5/8in T5 - 3in x 4 5/8in T7 - custom tenon (leave blank if you selected a side mount)	S8 - reinforced side wall (no predrilling) S9* - reinforced side wall (with predrilling) (leave blank if you selected a tenon mount)	BLK - black BR - bronze WH - white GR - gray CM - color match	H0 - no handhole H2 - 2 1/2in x 5in H3 - 4in x 6in CH - custom handhole	FLH - flag holder (leave blank if you do not want this option)	GFI - standard Ground Fault Circuit Interrupter GFIU - in use Ground Fault Circuit Interrupter (leave blank if you do not want this option)	TB9 - 9in high transformer base TB17 - 17in high transformer base (leave blank if you do not want this option)	1SH - one piece shroud 2SH - two piece shroud BC - bolt covers (leave blank if you do not want this option)
A515	+	T1	+	...	+	...	+	...
If T7,S9,CM,CH,GFI or GFIU selected please call for further instructions								
= A515-T1-BLK-H2-GFI-TB9								
*See accessories pages for info on F. Holder, GFI, Transformer Base and Shroud								

MODEL #	SHAFT LENGTH (FT)	TIP O.D. (IN)	BUTT O.D. (IN)	BOLT CIRCLE (IN)	BOLT SIZE (IN)	NOMINAL POLE WEIGHT (LBS)	5 EPA MAX (MPH)
A515	15	5.3	8.3	11 - 12	1 x 36 + 4.6T	5	100
A520	20	5.3	8.3	11 - 12	1 x 36 + 4.6T	63	100
A525	25	5.3	8.3	11 - 12	1 x 36 + 4.6T	94	100
A530	30	5.3	8.5	11 - 12	1 x 36 + 4.6T	113	100
A535	35	5.3	8.5	11 - 12	1 x 36 + 4.6T	137	100
A540	40	5.3	8.5	11 - 12	1 x 36 + 4.6T	162	100
FLA515	15	5.3	8.5	11 - 12	1 x 36 + 4.6T	62	140
FLA520	20	5.3	8.5	11 - 12	1 x 36 + 4.6T	84	140
FLA525	25	5.3	8.5	11 - 12	1 x 36 + 4.6T	103	140
FLA530	30	5.3	8.5	11 - 12	1 x 36 + 4.6T	140	140
SFLA515	15	5.3	8.5	11 - 12	1 x 36 + 4.6T	86	180
SFLA520	20	5.3	8.5	11 - 12	1 x 36 + 4.6T	102	180
SFLA525	25	5.3	8.5	11 - 12	1 x 36 + 4.6T	136	180
SFLA530	30	5.3	8.5	11 - 12	1 x 36 + 4.6T	145	180

FL = (Florida) rated for 140mph

SFL = (South Florida) rated for 180mph